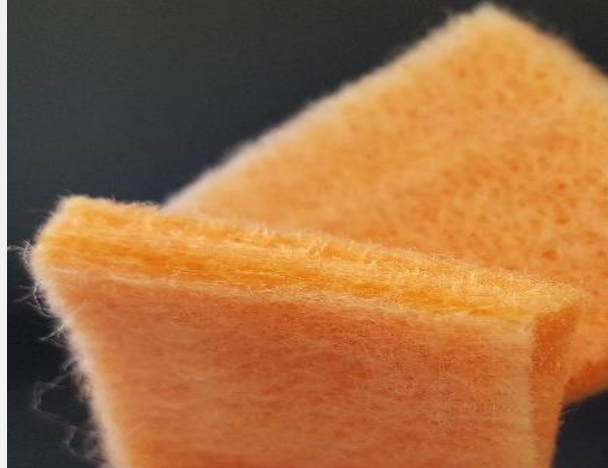


# GEOCAPT®

Non-woven fabrics for absorption  
of hazardous chemical substances



GEOCAPT® fabrics fix selectively the pollutants from leakages or wastewater avoiding their infiltration into the aquifer.

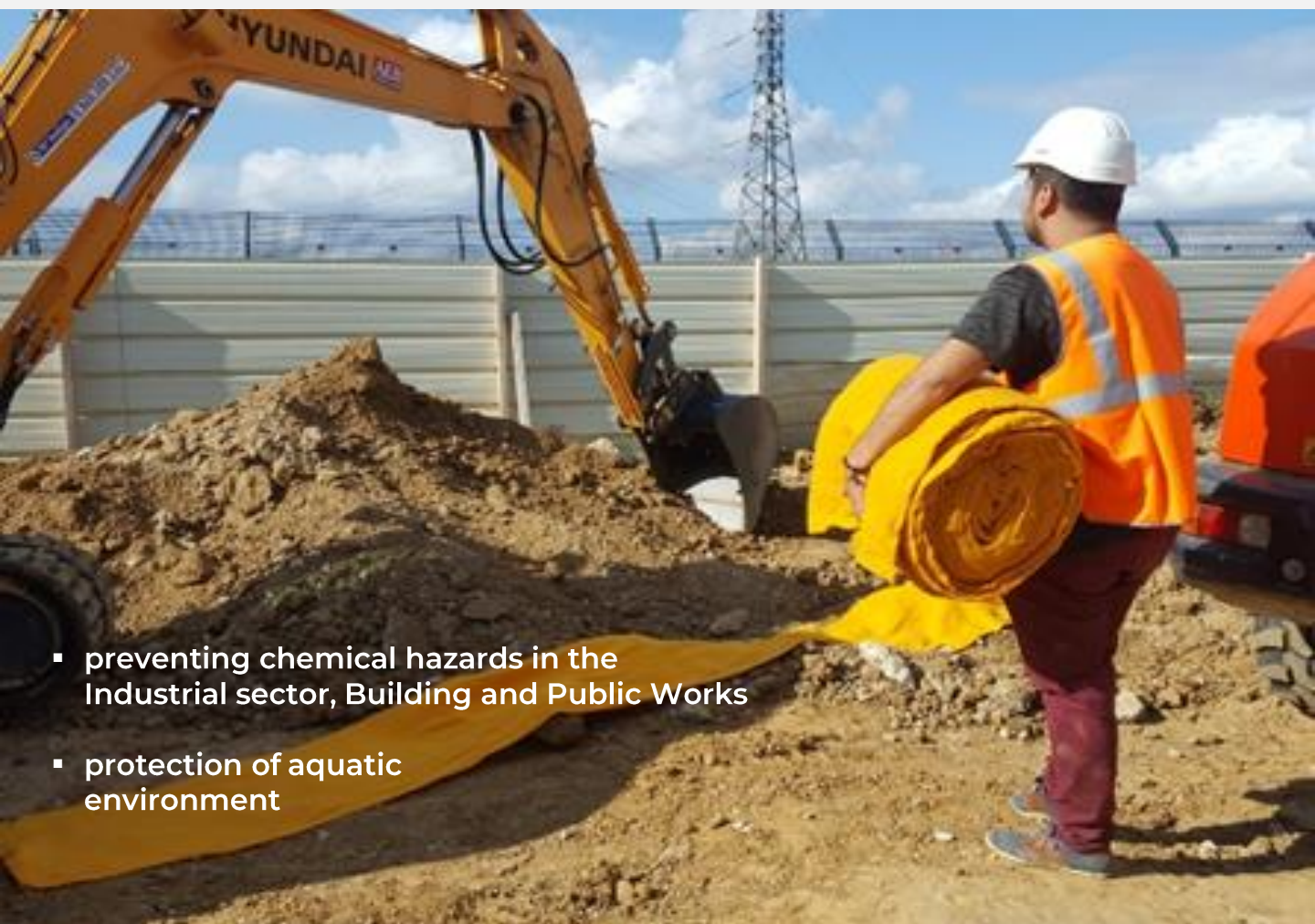
- acids, bases,
- toxic metals,
- micropollutants

Light

Easy to install

Mechanically strong

High absorption capacity



- preventing chemical hazards in the Industrial sector, Building and Public Works
- protection of aquatic environment

GEOCAPT® fabrics are to be installed directly to the ground, water tank or basement construction improving the competitive advantage of your technical offers.

- storm water drainage,
- polluted soils remediation,
- decontamination actions at construction and demolition sites,
- preventing water pollution from sites and works near water (permeable filtering geotextile barriers, carpets, cartridges etc.),
- polluted water storage (sewage disposal systems, storage tanks),
- overfilling of surface treatment baths, incidents in the surface treatment factories.

## Legislative context

These new security fabrics for absorption of chemical pollutants will be integrated perfectly within your accident prevention plan and control actions of emissions to the environment.

## Selective uptake of pollutants while allowing water drainage



## Wider range of absorbed substances compared to current materials : fabrics could be combined to fit specific needs.

GEOCAPT® B21, GEOCAPT® C21	Heavy metal removal: Cu(II), Ni(II), Zn (II), Pb(II), Cd(II), Co(II), Sr(II), Mg(II), Cr(III), Fe (II) and (III) etc.
GEOCAPT® F21, GEOCAPT® K21	Removal of irritating compounds of basic and acidic nature
GEOCAPT® H21	Removal of nitrates, corrosive compounds of acidic nature
GEOCAPT® I21	Removal of arsenic (III) and arsenic (IV) ions
GEOCAPT® Cs	Cs <sup>137</sup> absorption

## Examples of use

- Leakages, overflow, aggressive or pollutants liquids splashes in surface treatment sites: carpet laid down underneath the floor of the metallic baths.
- Aggressive liquids depollution and wiping on work tools and/or metallic or plastic materials.
- Soil decontamination from toxic metals in case of industrial accidents.
- Aggressive liquids transport.
- Protection of employees and manufacturing tools.

## Formats

- 50 cm x 10 m non-woven rolls, other sizes available on request. Maximum width of 160 cm.
- 50 cm x 100 cm mop size.
- Thickness ranges 2 up to 10 mm.